



BROOKLYN PUBLIC LIBRARY

Mission

It is the mission of Brooklyn Public Library to ensure the preservation and transmission of society's knowledge, history and culture, and to provide the people of Brooklyn with free and open access to information for education, recreation and reference.

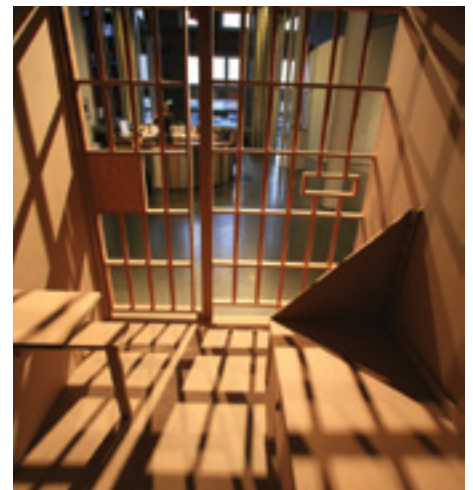
Vision

Brooklyn Public Library will be a vital center of knowledge for all, accessible 24 hours a day, and will be a leader in traditional and innovative library services which reflect the diverse and dynamic spirit of the people of Brooklyn.



CONTENTS

Letter from the Chair	4
Letter from the President & CEO	5
FY 2014/2015 Highlights	6
BPL by the Numbers.....	18
FY 2015 Donor List	21
FY 2015 Board of Trustees	26
Branches.....	27



LETTER FROM THE CHAIR



NICHOLAS A. GRAVANTE, JR.

What a difference a year makes.

When the year began, the average Brooklyn Public Library branch offered approximately 42 hours of service per week. Just over one-third of our libraries were open six days per week; the majority were only open five.

With additional support from Mayor de Blasio and the New York City Council, and with the implementation of a number of operating efficiencies, we were able to expand our hours in October 2014 and undertake our largest hiring in nearly a decade. As a result, BPL offered six- or seven-day service at two-thirds of our branches by the end of the year.

This laid the foundation for the Invest in Libraries campaign, a citywide effort waged by our supporters in 2015 to increase the city's funding for libraries. Months of advocacy by librarians and patrons ultimately resulted in a funding increase that allowed us to offer at least six days of service at every Brooklyn branch, increasing our average weekly hours of service to 49.

Inside our branches, thanks in part to increased support from thousands of generous donors, patrons continued to find new ways to improve their lives and engage with the community. Our New Americans Corners helped Brooklynites from all over the world access Library, city and federal services. Beginning readers and writers contributed works of prose and poetry to *New Expressions*, a new annual anthology of writing from the Library's Adult Learning Centers. And the Summer Reading program helped thousands of students stay engaged with literature while school was not in session.

It was a great year for Brooklyn Public Library, and on behalf of the entire Board of Trustees, thank you, as always, for your part in it.

Sincerely,

A handwritten signature in dark ink, reading "Nicholas A. Gravante, Jr." in a cursive style.

Nicholas A. Gravante, Jr.
Chair, Board of Trustees

LETTER FROM THE PRESIDENT & CEO

With new partnerships and through the continued generosity of our supporters, Brooklyn Public Library reached more people in more ways this year than ever before.

We were proud to serve as a registration center for idNYC, New York City's new municipal identification card. Central Library was one of the city's busiest sites, issuing IDs to more than 20,000 New Yorkers through June 30. As a first stop and a trusted resource for immigrants from all over the world, we were particularly eager to participate in a program that is open to all New Yorkers, regardless of their immigration status.

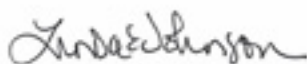
Culture in Transit, a joint project with Queens Library and the Metropolitan New York Library Council, shared BPL's archiving technology and expertise with institutions and individuals throughout the borough. Funded by the John S. and James L. Knight Foundation, Culture in Transit was one of several initiatives that connected patrons with technology. Another, the Library HotSpot program, a partnership with Google, loaned thousands

of mobile WiFi devices to Brooklynites on the wrong side of the digital divide.

With the opening of Spaceworks at Williamsburgh Library, patrons were able to access new program and event spaces in a historic Carnegie branch. Community organizations offering free programs included El Puente, L'Ecole des Beaux Arts and 826NYC. Meanwhile, three libraries, Park Slope, Bedford and Bay Ridge, provided Brooklynites with transit options through a new partnership with Zipcar.

We're grateful to the many patrons, donors, trustees, elected officials and volunteers who make it possible for the Library to serve every community in this diverse and growing borough. With your continued support, we look forward to many successful years ahead.

Very truly,



Linda E. Johnson
President & CEO



LINDA E. JOHNSON

EDUCATION



GOOGLE TRANSLATE TRAINING

CITY'S FIRST READERS

SKILLSHARE

DIGITAL PRIVACY & DATA LITERACY PROJECT

SUMMER READING

GOOGLE TRANSLATE TRAINING

SEPTEMBER 2014

Google volunteers host a workshop on Google Translate, a free online translation tool, at Sunset Park Library. The company donates tablets for patrons to use at the training.

CITY'S FIRST READERS

NOVEMBER 2014

BPL participates in the New York City Council's First Readers initiative, introducing children to the many joys and benefits of reading.

SKILLSHARE

MAY 2015

BPL patrons and staff share their skills with the community, offering free classes on website development, breakdancing, urban gardening and more.

DIGITAL PRIVACY & DATA LITERACY PROJECT

MAY 2015

BPL earns a \$240,729 grant from the Institute of Museum and Library Services Laura Bush 21st Century Librarian Grant Program for a two-year professional training project.

SUMMER READING

JUNE 2015

The 2015 Summer Reading program launches at every BPL branch. The program aims to prevent "summer slide" by encouraging students to read while school is out of session. Lead supporter: the National Grid Foundation.



Clockwise from top:

Google Translate, Summer Reading, Skillshare

ACCESS



SERVICE EXPANSION

IDNYC

LIBRARY HOTSPOT

INVEST IN LIBRARIES

ELITE 100 INFORMATION WEEK

CULTURE IN TRANSIT

BOOKMOBILE REFRESH

SERVICE EXPANSION

SEPTEMBER 2014

Funding from the mayor and city council, along with the implementation of various operating efficiencies, allows BPL to expand its hours and offer six- or seven-day service at two-thirds of its branches.

LIBRARY HOTSPOT

DECEMBER 2014

BPL, New York Public Library and Queens Library launch the Library HotSpot program to reduce NYC's digital divide through the free lending of 4G WiFi devices to patrons who do not have home internet access.

IDNYC

JANUARY 2015

Central Library opens its idNYC office. The new municipal ID program is available to all New Yorkers, regardless of immigration status.

INVEST IN LIBRARIES

MARCH 2015

NYC's three library systems kick off Invest in Libraries, a major—and ultimately successful—campaign to convince the city government to increase its financial support of libraries.

INFORMATION WEEK ELITE 100

APRIL 2015

The Library is recognized as one of the 2015 InformationWeek Elite 100, a ranking of the top business technology innovators in the United States.

**CULTURE IN TRANSIT**

MAY 2015

BPL, Queens Library and the Metropolitan New York Library Council partner to preserve New York City's rich history and cultural heritage. Culture in Transit delivers digitization equipment and expertise throughout the city to help neighborhoods catalog their histories.

**BOOKMOBILE REFRESH**

JUNE 2015

Brooklyn's Bookmobiles hit the road with a colorful new design by illustrator Adam J. Kurtz.

Library HotSpot

Check Out the Internet!



SIGN UP



CHECK OUT



GET CONNECTED

CULTURE



Evangeline Lilly

LINCOLN CENTER LIVE

CHIE NISHIO EXHIBIT

MIXING IT UP WITH HERVÉ TULLET

SQUICKERWONKERS AT BPL

MUSEUM OF SCIENCE FICTION EXHIBIT

LINCOLN CENTER LIVE

AUGUST 2014

A new partnership with Lincoln Center brings free musical, theatrical and dance performances to Brooklyn libraries.

CHIE NISHIO EXHIBIT

OCTOBER 2014

BPL hosts photographer Chie Nishio's *The Hasidim of Crown Heights, Brooklyn: A Community Study*.

MIXING IT UP WITH HERVÉ TULLET

OCTOBER 2014

Artist Hervé Tullet invites kids and families to Central Library to collaborate on a giant, colorful mural.



THE SQUICKERWONKERS AT BPL

NOVEMBER 2014

Actress Evangeline Lilly reads her children's book, *The Squickerwonkers*, to elementary schools students at Central Library.

MUSEUM OF SCIENCE FICTION EXHIBIT

FEBRUARY 2015

The Museum of Science Fiction, the world's first such institution, displays the winners of its architectural design competition at BPL.



Clockwise from top:

Mixing it Up with Hervé Tullet, Chie Nishio's The Hasidim of Crown Heights, Museum of Science Fiction

INCLUSION



CITIZENSHIP INSTRUCTION CLASSES

SALUTING OUR VETERANS

NEW AMERICANS CORNERS

HERMAN'S HOUSE

NEW EXPRESSIONS LITERARY JOURNAL

CITIZENSHIP INSTRUCTION CLASSES

SEPTEMBER 2014

BPL launches two year citizenship instruction program at four branches with funding from United States Citizenship & Immigration Services.

SALUTING OUR VETERANS

NOVEMBER 2014

The Library observes Veterans Day with a Veterans Resource Fair at Central. The event features a read-aloud and book signing with bestselling author Captain Luis Montalvan and his trusty service dog, Tuesday.

NEW AMERICANS CORNERS

FEBRUARY 2015

BPL establishes New Americans Corners at every branch, displaying multilingual resources—such as citizenship brochures and naturalization test study aides—in easily accessible, well-trafficked areas.

HERMAN'S HOUSE

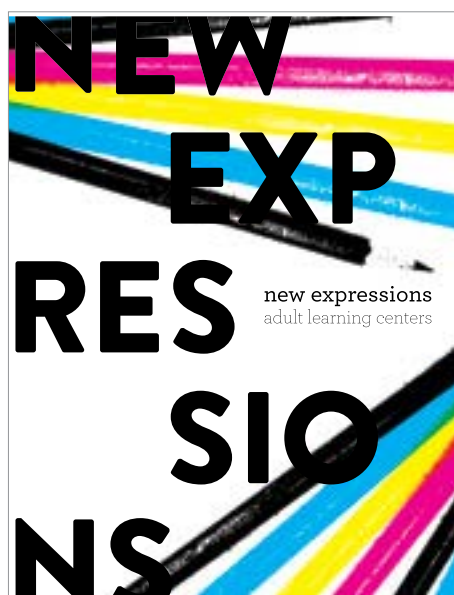
APRIL 2015

BPL's centerpiece spring exhibition, *#76759: Featuring the House That Herman Built*, showcases artist Jackie Sumell's work and correspondence with the late Herman Wallace, who spent over four decades in solitary confinement at Angola Prison.

NEW EXPRESSIONS LITERARY JOURNAL

JUNE 2015

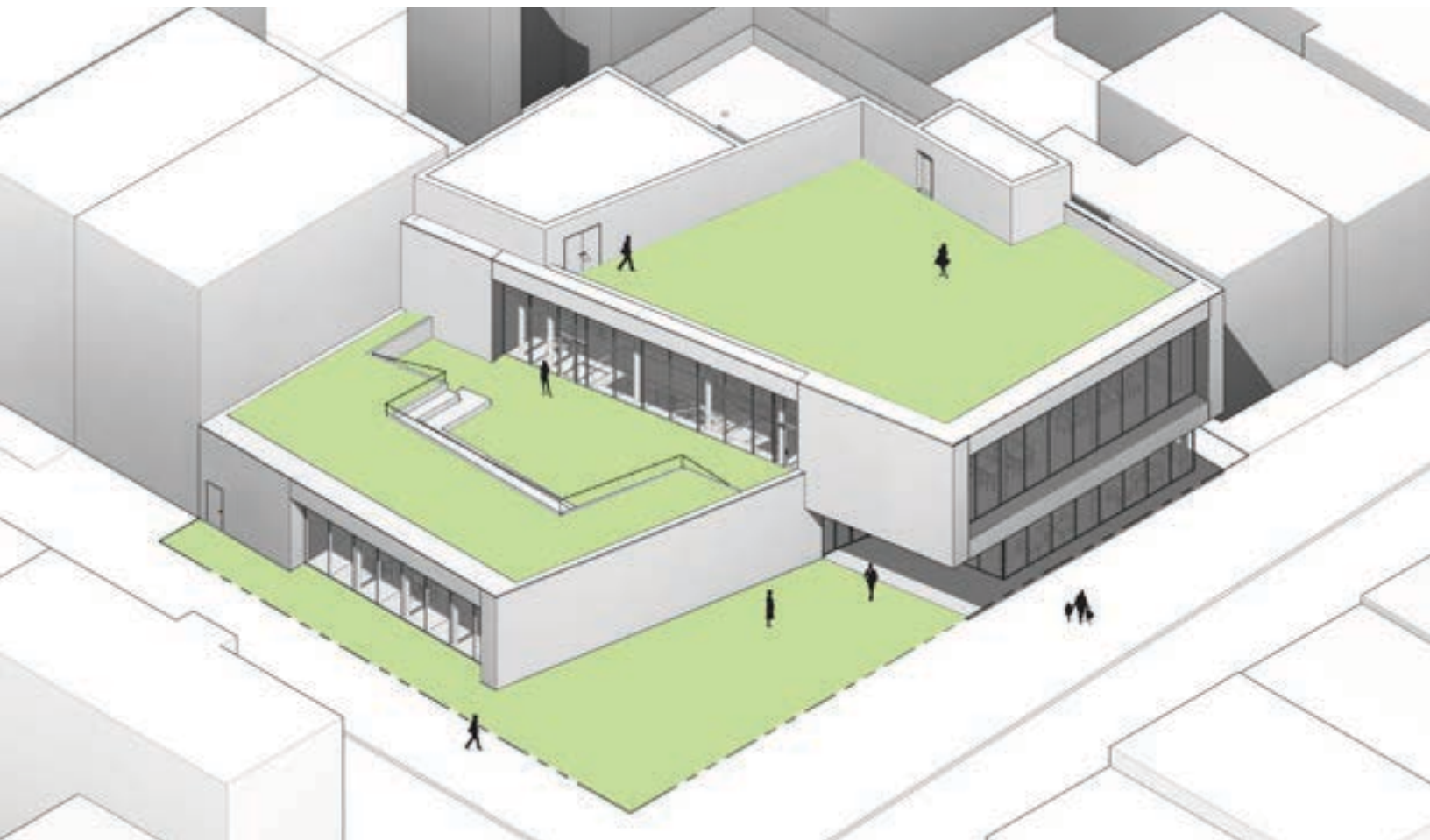
The Library's five Learning Centers host receptions to celebrate the accomplishments of their students. BPL also unveils *New Expressions*, a collection of fiction, memoir, poetry and essays from beginning adult readers and writers.



Clockwise from top:

New Americans Corner, Herman's House, New Expressions

SPACE



BROOKLYN HEIGHTS LIBRARY

GREENPOINT ENVIRONMENTAL EDUCATION CENTER

SPACEWORKS @ WILLIAMSBURGH

BRANCH IMPROVEMENT PROJECTS

BROOKLYN HEIGHTS LIBRARY

SEPTEMBER 2014

The Brooklyn Heights redevelopment project successfully completed the City's comprehensive land use approval process. The new, state-of-the-art library is scheduled to open in 2020. The branch will be the largest neighborhood library, with more space available for collections and programming.

GREENPOINT LIBRARY AND ENVIRONMENTAL EDUCATION CENTER

DECEMBER 2014

The Greenpoint Community Environmental Fund awards BPL a \$5 million grant for the Greenpoint Library and Environmental Education Center. Opening in 2018, the center will be a model of sustainable development, offering programming spaces for environmental organizations and increasing awareness of the neighborhood's unique, ongoing environmental challenges.

SPACEWORKS @ WILLIAMSBURGH

JUNE 2015

BPL partners with Spaceworks to renovate the second floor of Williamsburgh Library, creating new community programming space and affordable studios for artists.

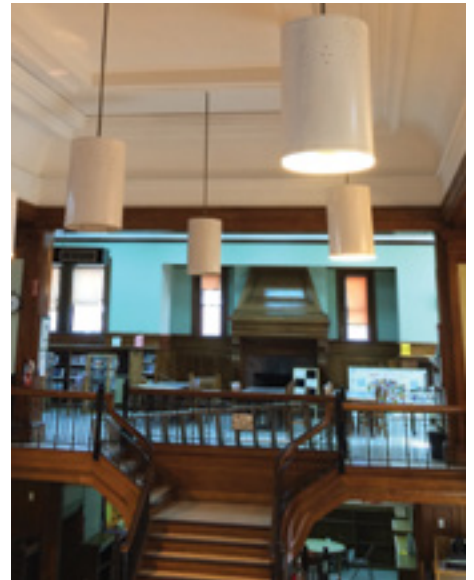
BRANCH IMPROVEMENT PROJECTS

THROUGHOUT THE YEAR

More than a dozen branches benefit from renovations and repairs, including Arlington and Leonard.



Conceptual rendering of the new Brooklyn Heights Library



Clockwise from top:

Brooklyn Heights Library, Arlington Library, Spaceworks @ Williamsburgh

STEWARDSHIP



Bike the Branches participant

BROOKLYN EAGLES SUMMER ROOFTOP PARTY

BROOKLYN CLASSIC

ZIPCAR AT THE LIBRARY

POWERUP! AWARDS

IMLS NATIONAL MEDAL

BIKE THE BRANCHES

BROOKLYN EAGLES SUMMER ROOFTOP PARTY

JULY 2014

With generous support from Sixpoint Brewery and Brooklyn Winery, over 130 friends join the Brooklyn Eagles on the roof of Central Library to celebrate BPL and enjoy a stunning sunset over Grand Army Plaza.

BROOKLYN CLASSIC

SEPTEMBER 2014

The second annual Brooklyn Classic raises funds for BPL's programs for children and youth. The Classic is the signature annual event of the Brooklyn Eagles, young and engaged supporters who volunteer, raise funds and advocate for the Library.

ZIPCAR AT THE LIBRARY

NOVEMBER 2014

Zipcars make their debut at Bedford, Bay Ridge and Park Slope libraries. BPL's partnership with Zipcar raises funds to support programming at the host branches.

POWERUP! AWARDS

DECEMBER 2014

The 11th annual PowerUP! Business Plan Competition awards financing and other prizes to the borough's most promising business ideas, including first-place winner JestGreen, a street vendor serving locally sourced greenery and juices.



IMLS NATIONAL MEDAL

FEBRUARY 2015

Brooklyn Public Library is named a finalist for the Institute of Museum and Library Services National Medal, the nation's highest honor given to libraries for service to the community.

BIKE THE BRANCHES

MAY 2015

Brooklynites pump their tires, buckle their helmets and hit the streets for the third annual Bike the Branches ride through the neighborhoods of BPL's 60 libraries.

NYC NEIGHBORHOOD LIBRARY AWARDS

MAY 2015

New Lots Library receives the 2015 NYC Neighborhood Library Award, the largest cash prize awarded directly to branch libraries in the country. Clinton Hill and Windsor Terrace earn richly deserved nominations.

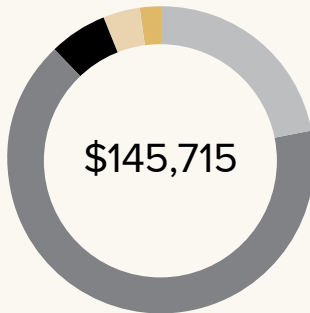


Clockwise from top:

Brooklyn Classic, PowerUP! winner Vander Carter

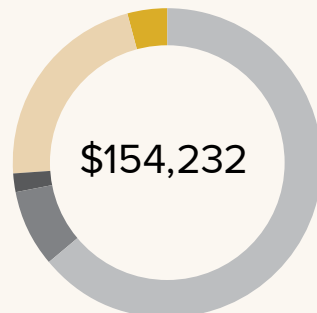
BPL BY THE NUMBERS

FISCAL YEAR 2015



FY 2015 TOTAL EXPENSES in thousands

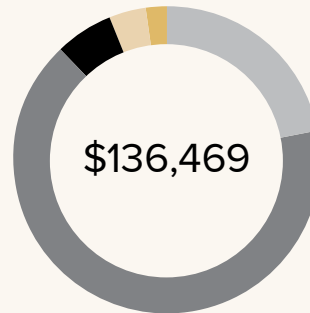
- 22% Central Library
- 66% Neighborhood Libraries
- 6% Special Programs
- 4% Management and General
- 2% Fundraising



FY 2015 TOTAL REVENUE & SUPPORT in thousands

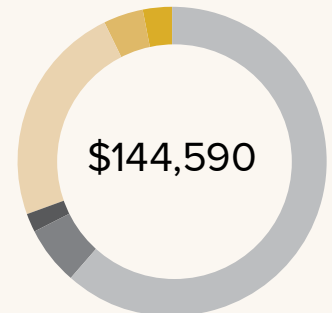
- 64% City of New York
- 8% State and Federal Govt.
- 2% Contributions
- 22% Contributed Facilities & Utilities
- 0% Net Investment Income
- 4% Other

FISCAL YEAR 2014



FY 2014 TOTAL EXPENSES in thousands

- 22% Central Library
- 66% Neighborhood Libraries
- 6% Special Programs
- 4% Management and General
- 2% Fundraising



FY 2014 TOTAL REVENUE & SUPPORT in thousands

- 61% City of New York
- 6% State and Federal Govt.
- 2% Contributions
- 23% Contributed Facilities & Utilities
- 4% Net Investment Income
- 3% Other

FINANCIAL RATIOS

Fiscal Year 2015			Fiscal Year 2014		Fiscal Year 2013	
Total Operating Expenses	\$ in 000s	%	\$ in 000s	%	\$ in 000s	%
Central Library	31,972	22%	30,122	22%	29,163	22%
Neighborhood Libraries	97,060	66%	90,670	66%	87,136	67%
Special Programs	8,236	6%	7,710	6%	7,425	6%
Management and General	6,195	4%	5,887	4%	5,463	4%
Fundraising	2,252	2%	2,079	2%	1,629	1%
	\$ 145,715	100%	\$136,469	100%	\$ 130,621	100%
Total Revenue & Support						
City of New York	98,691	64%	88,398	61%	85,705	59%
State and Federal Govt	11,855	8%	9,278	7%	12,055	8%
Contributions	3,732	2%	3,008	2%	3,786	3%
Contributed Facilities & Utilities	33,413	22%	33,721	23%	33,041	22%
Net Investment Income	633	0%	5,252	4%	4,255	3%
Other	5,908	4%	4,933	3%	7,491	5%
	\$ 154,232	100%	\$144,590	100%	\$ 146,333	100%

The accompanying statement of financial position was taken from the audited financial statements as of and for the year ending June 30, 2015, for Brooklyn Public Library.

For a complete copy of the audited financial statements, please write to:
Finance Department, Brooklyn Public Library, 10 Grand Army Plaza, Brooklyn, NY 11238

CONSOLIDATED STATEMENTS OF FINANCIAL POSITION *in thousands*

	June 30, 2015	June 30, 2014
Assets		
Cash And Cash Equivalents	\$ 15,604	\$ 14,938
Receivables, Net	11,229	6,543
Investments	43,032	39,942
Property And Equipment, Net	30,205	27,775
Other Assets	102	77
	100,172	89,275
Liabilities and Net Assets		
Accounts payable, accrued expenses and advances	\$ 9,307	\$ 5,393
Accrued wages and related liabilities	12,884	11,284
Deferred revenue	902	1,585
Total liabilities	23,093	18,262
Commitments and contingencies (Note 1)		
Net assets:		
Unrestricted		
Corporate	56,145	53,540
Board-designated for building renovation	7,900	5,000
Board-designated for use in subsequent fiscal year	5,439	5,939
Total Unrestricted	69,484	64,479
Temporarily restricted	5,079	4,026
Permanently restricted	2,516	2,508
Total net assets	77,079	71,013
	\$100,172	\$89,275

CONSOLIDATED STATEMENTS OF ACTIVITIES *in thousands*

	Unrestricted	Temporarily Unrestricted	Permanently Unrestricted	Total June 30, 2015	Unrestricted	Temporarily Unrestricted	Permanently Unrestricted	Total June 30, 2014
Operating support and revenues:								
City of New York	\$ 98,691			\$ 98,691	\$ 88,398			\$ 88,398
State of New York	7,393			7,393	7,066			7,066
Federal government	1,180			1,180	1,136			1,136
Contribution income	786	2,938		3,724	1,198	1,804		3,002
Purchase discount reimbursement contribution	1,407			1,407	1,169			1,169
Contributed facilities and utilities	33,327			33,327	33,301			33,301
Net investment income	1,375	168		1,543	1,345	157		1,502
Contributed goods and services	86			86	420			420
Special events, net of direct benefit to donors of \$178 and \$97 in 2015 and 2014, respectively	425			425	406			406
Fines, royalties and other revenue	4,076			4,076	3,277			3,277
	148,746	3,106		151,852	137,716	1,961		139,677
Net assets released from restrictions for operations	1,957	(1,957)		0	2,267	(2,267)		0
Total operating revenues and support	150,703	1,149		151,852	139,983	(306)		139,677
Operating expenses:								
Program services:								
Central library	31,972			31,972	30,122			30,122
Neighborhood libraries	97,060			97,060	90,670			90,670
Special programs	8,236			8,236	7,710			7,710
Total program services	137,268			137,268	128,502			128,502
Supporting services:								
Management and general	6,195			6,195	5,888			5,888
Fund-raising	2,252			2,252	2,079			2,079
Total supporting services	8,447			8,447	7,967			7,967
Total operating expenses	145,715			145,715	136,469			136,469
Change in net assets from operating activities	4,988	1,149		6,137	3,514	(306)		3,208
Non-operating activities:								
Grants and contributions	3,282	1		3,282	1,076	1		1,077
Permanently restricted contributions			8	8			5	5
Insurance Proceeds					165			165
Loss on disposal of fixed assets	(102)			(102)	(84)			(84)
Depreciation	(2,349)			(2,349)	(2,013)			(2,013)
Investment gains (losses) not designated for current operations	(814)	(96)		(910)	3,356	394		3,750
Net assets released from restrictions for capital expenditures					719	(719)		0
Change in net assets from non-operating activities	17	(96)	8	(71)	3,219	(324)	5	2,900
Change in net assets	5,005	1,053	8	6,066	6,733	(630)	5	6,108
Net assets – July 1	64,479	4,026	2,508	71,013	57,746	4,656	2,503	64,905
Net assets – June 30	\$69,484	\$5,079	\$2,516	\$ 77,079	\$ 64,479	\$4,026	\$2,508	\$ 71,013

Donors

FISCAL YEAR 2015 DONORS

\$1,000,000 +

Martha A. & Robert S. Rubin

\$100,000+

The Altman Foundation*
Carnegie Corporation of New York
Charles H. Revson Foundation
Citi Foundation
The David Berg Foundation, Inc.
FINRA Investor Education Foundation*
The Hearst Foundation, Inc.*
The Morris and Alma Schapiro Fund*
The Pinkerton Foundation
The Robin Hood Foundation*
Stavros Niarchos Foundation*

\$50,000+

Boies, Schiller & Flexner LLP
Henry and Lucy Moses Fund, Inc.
The Joseph LeRoy and
Ann C. Warner Fund*
National Grid Foundation

\$25,000+

Ambrose Monell Foundation
Anonymous
Bloomberg Philanthropies
Con Edison
The Fan Fox and Leslie R. Samuels
Foundation, Inc.*
Blake W. & Andrew Foote
John S. and James L. Knight Foundation
Susan & David Marcinek
The Starr Foundation

\$15,000+

The Achelis Foundation*
Astoria Bank
The Durst Organization
Epstein Teicher Philanthropies
Henry B. & Karoly S. Gutman
Miriam Katowitz & Arthur Radin
Michael & Jeanine Liburd
Macy's & Bloomingdale's
Janet & David Offensend
Robin Shanus & Stephen Merkel
Sills Family Foundation
Zipcar, Inc.

\$10,000+

Anonymous (2)
BET Networks
Clarissa & Edgar Bronfman
Cantor Fitzgerald/BGC Partners
Nina Collins & Cliff Perlman
The Edith Glick Shoolman
Children's Foundation

ELSAM Fund
Friends of Brooklyn Heights Library
Goldman Sachs
Jacqueline & Nicholas A. Gravante Jr.
Hudson Companies
Stephanie & Timothy Ingrassia
Linda E. Johnson
Karen A. and Kevin W. Kennedy Foundation
Leon Levy Foundation
Maimonides Medical Center
Kim-Thu Posnett & Michael Pastor
Denise & Mike Reiss
Sandra & Peter Schubert
David Solomon
Dr. Lucille C. Thomas
Time Warner Cable
Two Trees Management Co. LLC
Maureen & Thomas Wipf

\$5,000+

Pamela Brier & Peter Aschkenasy
Baker & Taylor
Beatty Harvey Coco Architects, LLP
BerlinRosen Public Affairs
Mary & David Boies
Andrea R. Bozzo & John Martinez
Neil S. Calet
Mary Dixie Carter & Stephen Kempf
Constance & Henry Christensen III
Citibank, N.A.
Anthony W. Crowell & David Rohde
Elizabeth G. Crowell & Robert Wilson
Crystal & Company
Dan Dees
Doul Construction Corp.
Kathy & Henry B. Elsesser
Ezra Jack Keats Foundation
Eliza & Jason Factor
Michael J. Festa & Family
Jaimie & David J. Field
Forest City Ratner Companies
Friends of Clinton Hill Library
Gibson, Dunn & Crutcher LLP
Elaine Golin
The Gretchen V. & Samuel M. Feldman
Private Foundation, Inc.
Alice Henkin & John Nicolich
Infor
Investors Bank
The J.M. Kaplan Fund
Jackson Lewis P.C.
John P. and Anne Welsh McNulty
Foundation
George C. Lee, III
Virginia Lovejoy & Carl Podwoski
James Marlas & Marie Nugent-Head Marlas

Marvel Architects PLLC
NSP Enterprises, Inc.
Barry M. Okun
Joey O'Loughlin
Lady Booth Olson & Theodore B. Olson
Los Blancos
Open Society Foundations
Park Avenue Building & Roofing
Supplies LLC
Peck Stacpoole Foundation
Penguin Random House
Pharos Systems International Inc.
Hillary Richard & Peter E. McCabe
Robert K. Steel Family Foundation
Jennifer & Sean Rodgers
Sheep-Shore Realty Corp.
Jennifer & Jonathan Allan Soros
Christine A. Spadaro & Rick Lodewick
Stop & Stor Charitable Fund
Kimberly Throm
Toshiko Mori Architect PLLC
U3 Advisors
Venable LLP
Williams
Amelia & James Wilson
Xerox

\$2,500+

Rebekah & Jonathan Ambjor
The Arthur and Patricia Hill Foundation
Martine Beamon & Edward Joyce
Erich R. Bechtel
Jenny & Michael Best
Virginia & Jake Blair
Lisa Melmed Cohen & Steven Cohen
The Honorable Alice Fisher Rubin &
Mr. Lowell Rubin
Friends of Bay Ridge Library
Friends of Cortelyou Library
Friends of Park Slope Library
Friends of Sheepshead Bay Library
Jeffrey M. Gennette
The George Backer Family Foundation, Inc.
Saul Goldhamer
Sharon Horowitz
Katherine L. Hosford & Christopher Welch
Infogroup
Innovative
Barbara R. & Michael Kaufman
The Laura B. Vogler Foundation
Krista & Jay Leahy
Lay Cheng Lee
Cindi Leive & Howard Bernstein
Amanda Lin & Nathan Thomas
Michael Tuch Foundation, Inc.
Robin Michaelson & David Mack

Donors

Moses L. Parshelsky Foundation
Elyse Newman & Ben S. Dolnick
Christina M. Norman & Charles R. Hunt
Benet O'Reilly
James J. O'Toole
Stuart I. Post & Christopher Kelley
Robert and Toni Bader Charitable
Foundation
Tamar Sagher
Janet A. Schumacher
The Shen Family Foundation
Sixpoint Brewery
Heidi & Scott Smith
St. Francis College
Philip Strongin
Robert J. Sweeney
Rosabel A. Wang
Kathy & Gordon Weil, III

\$1,000+

3M Library Systems
Albert Penick Fund
Alyssa Alpine
Anonymous (3)
Aquila Theatre Company
Liz Alter & Charles Duhigg
Diane Archer & Stephen Presser
Leslie & Alan Beller
Pamela & Joshua Berick
Abbe Bershatsky
Best of Brooklyn, Inc.
Laura Blady & Barinder Singh
Mary & Thomas Boast
Ambriel Bostic
Nancy & Anthony Bowe
Brooklyn Hospital Center
Lewis Burke
Butler's Hole South
Eliza Byard & Eva Kolodner
Becky & Matt Carpenter
Bevin & William R. Cline, Jr.
Elizabeth A. Comerford
Margery Cooper & Neil M. Corwin
Jodie & Eric Corngold
Corwin Family Charitable Foundation
John Coyne
Carla E. Craig & Stuart D. Freedman
Katharine & Peter Darrow
Louise de la Fuente & Mace Rosenstein
Lisa Detwiler & Jim Cramer
Gilles DeVoe & Rob G. Simon
Joseph I. Douek
Eastern DataComm, Inc.
Jennifer & Steven Eisenstadt
EisnerAmper LLP
Hallie Eng
Jane Brody Engquist

Melissa Faas
Nicola & Andrew Fabens
Erika L. Faust & Colin Gardner
Michael D. Fleisher
Katherine Flynn
Lizanne Fontaine & Bob Buckholz
Polly Fossey
Harold Foster
Friends of Greenpoint Library
Friends of Kings Bay Library
Friends of Mill Basin Library
Samantha K. Garbus
Barbara Germack
Linda Gibbs & Thomas L. McMahon
Lara Gruber
Linda Hacker
Margaret L. Hagen
Mariet J. Hamrah
Kristin & David Harman
Jeffrey D. Henigson
Marlene Hess & James D. Zirin
Cate & Laurence Holt
Margie & Jeff Honickman
Yong-Ja Howerly
Melissa Hsiung & David Packer
Patricia Isen
Ivy Rose Foundation Inc.
JPMorgan Chase Bank, N.A.
Michael Jackson
Natalie & Peter Jaros
Katya Jestin & Kit Roane
Betty & Stephen Kahn
Samantha & Allen Katz
Phyllis & Edward Kwalwasser
David N. Lafleur
Carrie & Michael Lamb
Jonathan Lazzara
Lemberg Foundation, Inc.
Gregg Lemkau
LEVENBETTS
Karen A. Levine
Magdalena & Brian Levy
Robin K. & Jay L. Lewis
LiRo Group
Jack S. Lusk
Leslie Marshall & Mauro Premutico
Lexy Mayers & David Lesser
Dr. Therese McGinn
Medco Electrical Contractors, Inc.
Dr. Amit Mehta & Ms. Marci Lucia
Carol & Gino P. Menchini
Ronay & Richard Menschel
Metzger-Price Fund
Midwest Tape
Michelle & Maziar Minovi
Lori & David Moore
Elizabeth A. Morrow

National Cyber Security Alliance
Laura Nelsen & Michelle Adams
Eliot Nolen & Tim Bradley
Norman Foundation
OverDrive
Lise L. Porter
PRADA USA
Anna Quintana & David Von Spreckelsen
Julie Raskin
Kristin Kubiak Ratner & Austin G. Ratner
Rachel M. Ratner & Richard Greenspan
Neil Readwin
Tucker Reed
Ridgewood Savings Bank
Susan & William Rifkin
Erminia Rivera
Stephen I. Sadove
Sagalyn Family Fund
Irving Sandorf
Teresa Scanlon
Elizabeth Scheines & Ron Elton
Jennifer & Andrew Schenker
Elizabeth H. Schmidt & Eric Liftin
Christie A. Seaver
Dr. Tamer & Mrs. Elif Seckin
Glen T. Senk
Dr. Paula Silver
Dr. Loren Skeist
Joyce S. Peggy & Peter Smith
Mimi & Richard A. Somerby
Laurence T. Sorkin
Tracey & Shanin Specter
Krista Stack & Neal Pawar
Anna Stetsovskaya
Ellen & Bill Taubman
TerraCRG
Josephine & Philip Teverow
Beverly G. Thomas
Allison Thrush & Arthur C. Chang
Laura Trevelyan & James Goldston
Helen Tsanos
Charles Tse
Tienne Vu
Kathleen G. & William Weigel
Charles A. Weiss, Esq.
Victoria Westhead & John Levy
Wendy & Robert Wetstone
Joanne Witty & Eugene Keilin
Allison & David M. Womack
Yoswein New York
Francesca Zaccaro & David Shaw
Zeldin Family Foundation
Elisa Zuritsky & Jordan Barowitz

\$500+

Sarah & David Abramowitz
Ryan J. Agius

Cherylyn & Chris Ahrens
 Alexandra Alger & Dan Chung
 Cecilia Z. & Sundeep B. Amrute
 Christina & Steven J. Armieri
 George Arzt
 Jami Attenberg
 Victoria B. Bailey
 Frank K. Bamberger
 Kristen & Daniel Barile
 Baumrind & Baumrind
 Susan S. & Benjamin Baxt
 Kristin & Peter Becker
 Sarah E. Benesch
 Sara Bennett
 James D. Berry
 Yelena Bide & Jeremy Robbins
 Leon J. Bijou
 Ellen Bogolub & Neil Friedman
 Dr. Michael & Mrs. Shelley Brody
 The Brooklyn Montessori Ltd
 Brownstone Tutors
 Eleanor & Ted Bukowsky
 Carver Federal Savings Bank
 Albert X. Chiu
 Katherine & Timothy Clifford
 Ellen & Chris Covas
 Ramon Cruz
 Peter D. Dechiara
 JoAnne K. & Duane K. Devries
 Edward Diaz
 Staley W. Dietrich
 Marth Bakos Dietz & Stephen E. Dietz
 EBSCO Information Services
 Susie O. & Tony Ellis
 Camilla Enders & James Bernfield
 Ivy Beth Epstein & Joshua Levine
 Louise Forsyth & Howard Stein
 Elizabeth A. Franks
 Mary & Robert Frenzel-Berra
 Ellen Freudenheim & Daniel Wiener
 Friends of Dyker Heights Library
 Friends of New Utrecht Library
 Diane & Eric Fung
 Stephen Furnstahl
 Emma Fusco-Straub
 Mary Rose Gasner
 Stuart Glasser
 Virginia P. Gliedman
 Marilyn Go & Richard H. Dolan
 Dr. Margaret Clark Golden
 Johanna Goldfeld & Bradley M. Rank
 Peter W. Goldstein
 Rachel Goodman & Michael Reifman
 Roberta & Michael Gordon
 Sharon Greenberger & Jonathan Fried
 Amy Habie
 Elizabeth Hansen
 Susannah & Spencer Harrington
 Nancy & Dozier Hasty

Alexes Hazen
 David Held
 Lisa E. Heller & Orlando Bagwell
 Foster N. Henry
 Jill A. Herzig
 Suzette C. Hewitt
 Victoria R. Hill
 Richard W. Hulbert
 Humanscale
 Impact Events Group Inc.
 Barbara A. Janowitz & Peter Entin
 Laura R. Johnson
 Katherine Jollon
 Amelia Josephson
 Winston Lam
 Lectorum Publications
 Nadine C. Legros
 Robin E. Lester-Kenton & William Kenton
 Irina Likhkina
 Nancy Lipsey
 Jeff Little
 Robert Longo
 Maureen E. Mahon
 Robin K. Marshall
 Carolyn & Mark Mason
 Jerri & Tom Mayer
 Elizabeth G. & Michael Mayers
 Yolanda McBride
 Lori McGlinchey & Eric Vieland
 Dana & Trey Muldrow III
 Asha & Devdutt Nayak
 Madeline Nelson
 Karen Nelson & Daniel L. Greenberg
 Doris M. Ohlsen
 Tammy Oler
 Donald S. Owings
 Evelyn & Norman Padnos
 Rosamund Palmer & Miles H. Portek
 Ami Paradise
 Katherine L. Patton
 M. Kristina Peterson
 Diana M. Plunkett & Patrick Colimon
 Robert Potter
 Leslie & David Puth
 Rochelle & Ron Rauchberg
 Angela M. Reed
 Susan & Peter Restler
 Julie & Joseph J. Romano
 Mitchell Rothzeid
 Donna M. Rubens
 Ansley Samson & Dennis Gephardt
 Julia Saunders & Governor Tipton
 Ann Schaetzel & Richard Bogart Barber
 Marcia Schorr
 Carlo A. Scissura
 Jane A. & Anthony P. Scotto
 Sentrum Marketing, LLC
 Kate Shaw
 Susan & Lawrence I. Sills

Marilyn Singer & Steven Aronson
 Ravi Sitwala
 Sarah & Peter Steinberg
 Adam Sternbergh
 Matthew Striebel
 Alexandra Styron & Ed Beason
 Margaret Sullivan
 Anne & Joseph Taranto
 Ellen Tarlow
 Eve Teipel & Josh Engelman
 William Thomas
 Grace & John Timberlake
 Paul Torchia
 Sherman Tsui
 Ellen P. & Donald G. Weir
 Sam Weisenberg
 Galen & Michael Weiser
 Betsy & Edward Wheeler
 Jennifer R. Williams
 Catherine L. & Thomas A. Wornom
 Mandy & James Wynn
 Derek Yi
 Kate Zuckerman & Simon Lipskar

\$250+

Adedayo Adedeji
 Noreen & Derek Adler
 Judith Altreuter
 Gabrielle Anderson
 Denise Andreu
 Ellen & Enrique A. Arana
 Nicole Asquith
 Alexandra Atkins & Michael Poole
 Anne Feigus & Alan Aviles
 Janet S. Axelrod & Tim Plenk
 Dorothy J. Barnhouse & John S. Bales
 Marcia & Michael Beck
 Jana & Thomas W. Bergdall
 Sheri Berman & Gideon Rose
 Nancy & Michael Black
 Allegra Blackburn-Dwyer & John O'Neill
 Kristie Blase
 Daniel Bloomberg
 Louis H. Blumengarten
 Emma Boast
 Christopher Boies
 Pamela & Jack Bolen
 Kathryn Borgatti & Dr. Daniel Evans
 Alyssa Boyer
 Park Bramhall
 Leigh Holliday Brannan &
 Justin Brannan
 Jocelyn Brown
 Susan Buchsbaum & Jeffrey Gratz
 Conway A. Burbank
 Margaret Burns
 Mary Byrne
 Walter Cain & Paulo Ribeiro
 Martha F. Cameron & Gary A. Goff

Donors

Barbara & Mark Cane
 Antoinette Carrano
 Daryl Chen
 Claudia Churnetski
 Mary Cipriano
 Claire G. Cohen
 Carol M. & Timothy A. Cole
 Jennifer R. Cole
 Kevin Conzelmann
 Julia T. Cornely
 Stephanie Crittenden
 Matthew Crosby
 Eric de Cavaynac
 Katherine Degn
 DeLaCour Family Foundation
 Lydia L. Denworth & Mark B. Justh
 Rena Deutsch
 Michaela Diverio
 Erin Dodd & Richard Baumert
 Dana Dratch
 Elizabeth A. Duwe
 East Church Avenue Business
 Association, Inc.
 Daniel P. Ehrenhaft
 Melissa Eisenstat
 Carolyn T. Ellis & H. Wise
 Kathleen V. & Ronald L. Ellis
 Jenny Farelly & George Fontas
 The Honorable Anne G. Feldman
 Katherine A. Ferrara
 Paula & Edward Fichtner
 Daniel Finkelstein
 Sydel & David Fishman
 Elizabeth Foster
 Laurel F. & Woodman B. Franklin
 Dr. Sharon A. Friedberg
 M. Salome Galib & Duane McLaughlin
 Bernard J. Galiley
 Ann & Mark Gallops
 Dr. Arlene Gellman & Mr. Don Gross
 Pamela J. Glaser & George E. Nashak
 Adrienne Glasgow
 Erik Goetze
 Carol Goldberg
 Dana K. Goldberg & David Woloch
 Jennifer Gordon
 Mary & Robert H. Gow
 Emily L. Granrud
 Diane & William Greer
 Brian A. Griffith
 Sara S. & Dennis P. Gronim
 Christine Grove
 Lisa Grumet & Mark H. Daly
 Karen Halteman
 Elizabeth & Jaime Hammel
 Ashley Hamza
 Esther Han & James Matheson
 Daniel Hantman & Brian Healy
 Melanie J. Hartzog

Elizabeth Hinchman
 Glenn Hirshon
 China & Michael Hoffman
 Florence Hutner & David M. Holmes
 Laura Hulbert & Jon Oshima
 Ani F. Hurwitz
 Andrew Ingkavet
 David Irving
 Satinder Jawanda & Amitabha Bose
 Kathryn L. Johnson & Marshall Hagins
 Julia V. & Rudy M. Jordan
 Dr. Tricia Juhn
 Deborah Kapell & Daniel Tinkelman
 Zsuzsanna Karasz & John Lipsky
 Marie Clare Katigbak & Peter Goldwasser
 Jeannetta & Albert I. Kaufman
 Laura Kenney
 Kyle Kimball
 Noel J. Kimmel
 Janet M. & Mark R. Kindy
 Martina Klich
 Sami Kohan
 David H. Krasnow
 Susie Kravets & Marc Wehby
 Katherine & Vijay Kumar
 Stephen Lachs
 Dori Landsman
 Janet Lee
 Stephanie Lee
 Jeffrey Locke
 Sayar Lonial
 William Lopez
 Linda Lupia
 Maureen & George T. Lynch
 Nancy J. Lynch
 Leah Macinskas-Le
 Lauren Mack & John Sawicki
 Kristie & Eldred Maduro
 Ilya S. Magazanin
 Joanna Maravel
 Elizabeth W. Martin
 Jean R. Matoi
 Brian Maurer
 Dave Mazzoli
 Pamela & Joseph M. McCarthy
 Kathleen McGee & Joel Kress
 Mary McGregor & Eric Schultz
 Carrie McLaren
 Cameron McNeil
 JoAnne Meyers
 Liane & Mark Mihlebach
 Kathryn Miles
 Timothy Milford
 Rabbi Joshua & Mrs. Betsy Minkin
 Robert C. Monroe
 Barbara & Richard Moore
 Ellen S. & Daniel J. Muller
 Joseph P. Murin
 Ellen Murphy

Rosario Murphy & Michael Salvatore
 Suzanne Myrick
 Regina M. Neal & Michael Ambrosio
 Brad Negbaur
 Sharon Nelles & Scott S. Sager
 Amy Neuhardt
 Christine Newman
 Katie & Michael W. Newman
 Eric Ng
 Sherry L. Norris & John Bauman
 Suzanne O'Keefe & Douglas Martin
 Sheun Olatunbosun
 Manuel Orillac
 Lisa Choi Owens
 Judith & Stuart I. Parker
 Nicholas D. Patacsil
 Jules A. Peemoeller
 Westley Pemberton
 Arnaldo Perez
 Herbert Persky
 Ellen & Philip J. Phillips
 Harriet S. Plaskow
 Leonard Podair
 Michael S. Popper
 Rebecca T. Price
 Dr. Joseph & Mrs. Rose Raziano
 Daniel P. Reid
 Carol J. Reuter
 Alex Riccobono
 Adam J. Riff & Chris Coffey
 Adam Ring
 Eve & Brett Robinson
 Barbara A. Rogers
 Andrew Romano
 Sharyn Rosart & Nathaniel Marunas
 Morgan Rosse
 Anya Rous
 Amy Ryan & Eric Slovin
 Saami Sabiti
 Ilana Schachter
 Beth I. Schneider & Steve McFarland
 Mark Schwartz
 Meryl Schwartz & David Weinraub
 Kate Scott
 Nirav Shah
 Juliet K. Sharrock
 Stephen Shefsky
 Rachel Sherman
 Barbara Shrager
 Barbara A. Simmons
 Carolina Simon
 Jennifer Simonds
 Patricia J.S. Simpson
 Amy M. Slagle
 Dr. Elaine Sloan
 John L. Smith
 Raynor A. Smith
 Regan A. Solmo
 Beverly Solochech

Anne Stameshkin
 Robert N. Stanton
 Lenore & Peter D. Sternlight
 Rebecca Stevens & Michael V. Bruno
 Harriet Stollman
 Alyson Stone
 Steven Storch
 Kathleen & Michael Stringer
 Doris & Barry Strugatz
 Allie & Patrick Sweeney
 Laurie Tamis & Michael Kalt
 Marco Tan
 The Tang Fund
 Ira Tatelbaum
 Emma L. Taylor
 Michael W. Teller
 Christina Tettonis
 Constance Thatcher
 Arlene Thomashow
 Fenella Thornton & Richard Serrano
 Magda Jimenez Train &
 Patrick Train-Gutiérrez
 Patricia Trembath & Robert Ross
 Shin-pei Tsay & Sean E. Cunningham
 Ellie Meek Tweedy & David B. Tweedy
 Unique Management Service, Inc.
 United Way of New York City
 Valerie Valmont
 Irene & Richard M. Van Slyke
 James Vosotas
 Catherine Waelder Weiss & Ronald Weiss
 Alison Weaver & Jeffrey I. Martin
 Dawn S. Wheatley & Bruce Schaller
 Whispering Bells Foundation
 Donna T. & Robert W. Whiteford
 Jessica Yager & David Enrenberg
 Mark Yarm
 Melodie Young
 Angela Zyskowski & Frank J. Fogarty

Bequests

Estate of Mary Rose Dallal
 Estate of Chester V. Elkind
 Estate of Eugene Feldman
 Estate of Dorris Mack Henderson
 Estate of Irma F. Lesser
 Estate of Frances Claire Reville
 Estate of Claire Wasserman

Matching Gifts

American Express Foundation
 Gift Matching Program
 Colgate-Palmolive Company
 Deutsche Bank Americas Foundation
 U.S. Matching Gifts Program
 The Ford Foundation
 Matching Gift Program
 GE Foundation Matching Gift Program
 Goldman, Sachs & Co.
 Matching Gift Program

Google Inc. Matching Gifts Program
 iStar Financial
 JPMorgan Chase Foundation
 Macy's
 Microsoft Matching Giving Program
 Morgan Stanley Annual Appeal
 and Charitable Spending
 Account Programs
 Och-Ziff Capital Management
 Penguin Random House Matching
 Gift Program
 Perry Capital, LLC
 Pfizer, Inc. Matching Gift Program
 Truist
 Tyco Employee Matching Gifts Program

In-Kind Donations

BRIC Arts Media
 Gothamist
 Heights Chateau
 Dorothy & Chaim Koppelman
 National Grid Foundation
 Naturally Delicious
 New York City Department
 of Transportation
 NYC & Company
 NYC Bike Share
 Penguin Random House
 Larry Racioppo
 Red Beard Bikes
 Ride Brooklyn
 Sixpoint Brewery
 Tattly
 Transportation Alternatives
 WCBS-TV-2 and WLNY-TV-10/55

Whitman Circle Patrons Program Fiscal Year 2015 Members

Alyssa Alpine
 Martine Beamon & Eddie Joyce
 Erich R. Bechtel
 Kristin & Peter Becker
 Jenny & Michael Best
 Bevin & William R. Cline
 Virginia & Jake Blair
 Mary & Thomas Boast
 Maria Luisa Canovas & Mark Cole
 Constance & Henry Christensen, III
 Lisa Melmed Cohen & Steven Cohen
 Nina Collins & Cliff Perlman
 Joanna & David Dosik
 Paula & Hayden Dunbar
 Katherine & Luke Fichthorn
 Blake & Andrew Foote
 Susanne Forsyth & Mark VanWyk
 Jeffrey M. Gennette & Geoff Welch
 Linda Gibbs & Thomas McMahon
 Elaine Golin
 Jacqueline & Nicholas A. Gravante, Jr.
 Rebecca & Brian Gray

Lisa E. Heller & Orlando Bagwell
 Cate & Laurence Holt
 Katherine L. Hosford & Christopher Welch
 Natalie & Peter Jaros
 Katya Jestin & Kit Roane
 Michele & David Joerg
 Linda E. Johnson
 Betty & Stephen Kahn
 Miriam Katowitz & Arthur Radin
 Samantha & Allen Katz
 Carrie & Michael Lamb
 Christian Langbein & Benjamin Bashein
 Michael & Jeanine Liburd
 Sarah & Michael London
 Susan & David Marcinek
 Leslie Marshall & Mauro Premutico
 Carol & Gino P. Menchini
 Michelle & Maziar Minovi
 Janet & David Offensend
 Stuart I. Post & Christopher Kelley
 Erminia Rivera
 Jennifer & Sean Rodgers
 Sophia Romero-Schwartz &
 Daniel Schwartz
 Amy & Gregory Rowland
 Sandra & Peter Schubert
 Dr. Tamer & Mrs. Elif Secken
 Robin Shanus & Stephen Merkel
 Jennifer Small & Adam Wolfensohn
 Laura Trevelyan & James Goldston
 Tienne Vu
 Kathleen & William Weigel
 Maureen & Thomas Wipf
 Elisa Zuritsky & Jordan Barowitz

Government Grants

The City of New York
 Institute of Museum and Library Services
 National Endowment for the Arts
 NYC Center for Economic Opportunity
 NYC Department of Information
 Technology and Telecommunications
 NYC Department of Youth Development
 NYC Mayor's Office of Adult Education
 New York Council for the Humanities
 NYS Attorney General/NYS Department
 of Environmental Conservation-
 Greenpoint Community
 Environmental Fund
 New York State Coordinated Outreach
 Services Program
 New York State Council on the Arts
 New York State Education Department
 New York State Library
 The State of New York

Board of Trustees

OFFICERS

Nicholas A. Gravante, Jr., *Chair*

Miriam Katowitz, *Vice Chair*

Kyle Kimball, *Vice Chair*

Peter Aschkenasy, *Treasurer*

Robin Shanus, *Secretary*

EX-OFFICIO MEMBERS & DESIGNATED REPRESENTATIVES

Hon. Bill de Blasio
Mayor of the City of New York

Hon. Eric Adams
President of the Borough of Brooklyn
Represented by Ingrid Lewis-Martin

Hon. Melissa Mark-Viverito
Speaker of the New York City Council
Represented by Reginald D. Shell

Hon. Scott M. Stringer
Comptroller of the City of New York
Represented by Gregory Davidzon

MEMBERS

Jordan Barowitz

Michael Best

Nina Collins

Anthony W. Crowell

Joseph I. Douek

Jeff Gennette

Hank Gutman

Cindi Leive

Michael Liburd

Susan Marcinek

Gino P. Menchini

Kim-Thu Posnett

Lisa Price

Hon. Alice Fisher Rubin

Sandra Schubert

Christina Tettonis

Dr. Lucille C. Thomas

Antonia Yuille Williams

Linda E. Johnson

President & CEO

Branches

Central Library

10 Grand Army Plaza
718.230.2100

Arlington Library

203 Arlington Avenue
718.277.6105

Bay Ridge Library

7223 Ridge Boulevard
718.748.5709

Bedford Library

496 Franklin Avenue
718.623.0012

Borough Park Library

1265 43rd Street
718.437.4085

Brighton Beach Library

16 Brighton First Road
718.946.2917

Brooklyn Heights Library

280 Cadman Plaza West
718.623.7100

Brower Park Library

725 St. Marks Avenue
718.773.7208

Brownsville Library

61 Glenmore Avenue
718.498.9721

Bushwick Library

340 Bushwick Avenue
718.602.1348

Business & Career Library

280 Cadman Plaza West
718.623.7000

Canarsie Library

1580 Rockaway Parkway
718.257.6547

Carroll Gardens Library

396 Clinton Street
718.596.6972

Clarendon Library

2035 Nostrand Avenue
718.421.1159

Clinton Hill Library

380 Washington Avenue
718.398.8713

Coney Island Library

1901 Mermaid Avenue
718.265.3220

Cortelyou Library

1305 Cortelyou Road
718.693.7763

Crown Heights Library

560 New York Avenue
718.773.1180

Cypress Hills Library

1197 Sutter Avenue
718.277.6004

DeKalb Library

790 Bushwick Avenue
718.455.3898

Dyker Library

8202 13th Avenue
718.748.6261

East Flatbush Library

9612 Church Avenue
718.922.0927

Eastern Parkway Library

1044 Eastern Parkway
718.953.4225

Flatbush Library

22 Linden Boulevard
718.856.0813

Flatlands Library

2065 Flatbush Avenue
718.253.4409

Fort Hamilton Library

9424 Fourth Avenue
718.748.6919

Gerritsen Beach Library

2808 Gerritsen Avenue
718.368.1435

Gravesend Library

303 Avenue X
718.382.5792

Greenpoint Library

107 Norman Avenue
718.349.8504

Highlawn Library

1664 West 13th Street
718.234.7208

Homecrest Library

2525 Coney Island Avenue
718.382.5924

Jamaica Bay Library

9727 Seaview Avenue
718.241.3571

Kensington Library

4207 18th Avenue
718.436.0545

Kings Bay Library

3650 Nostrand Avenue
718.368.1709

Kings Highway Library

2115 Ocean Avenue
718.375.3037

Leonard Library

81 Devoe Street
718.486.3365

Macon Library

361 Lewis Avenue
718.573.5606

Mapleton Library

1702 60th Street
718.256.2117

Marcy Library

617 DeKalb Avenue

McKinley Park Library

6802 Fort Hamilton Parkway
718.748.8001

Midwood Library

975 East 16th Street
718.252.0967

Mill Basin Library

2385 Ralph Avenue
718.241.3973

New Lots Library

665 New Lots Avenue
718.649.0311

New Utrecht Library

1743 86th Street
718.236.4086

Pacific Library

25 Fourth Avenue
718.638.1531

Paerdegat Library

850 East 59th Street
718.241.3994

Park Slope Library

431 Sixth Avenue
718.832.1853

Red Hook Library

7 Wolcott Street
718.935.0203

Rugby Library

1000 Utica Avenue
718.566.0054

Ryder Library

5902 23rd Avenue
718.331.2962

Saratoga Library

8 Thomas S. Boyland Street
718.573.5224

Sheepshead Bay Library

2636 East 14th Street
718.368.1815

Spring Creek Library

12143 Flatlands Avenue
718.257.6571

Stone Avenue Library

581 Mother Gaston Boulevard
718.485.8347

Sunset Park Library

5108 Fourth Avenue
718.567.2806

Ulmer Park Library

2602 Bath Avenue
718.265.3443

Walt Whitman Library

93 St. Edwards Street
718.935.0244

Washington Irving Library

360 Irving Avenue
718.628.8378

Williamsburgh Library

240 Division Avenue
718.302.3485

Windsor Terrace Library

160 East Fifth Street
718.686.9707

Follow us!



bklynlibrary.org